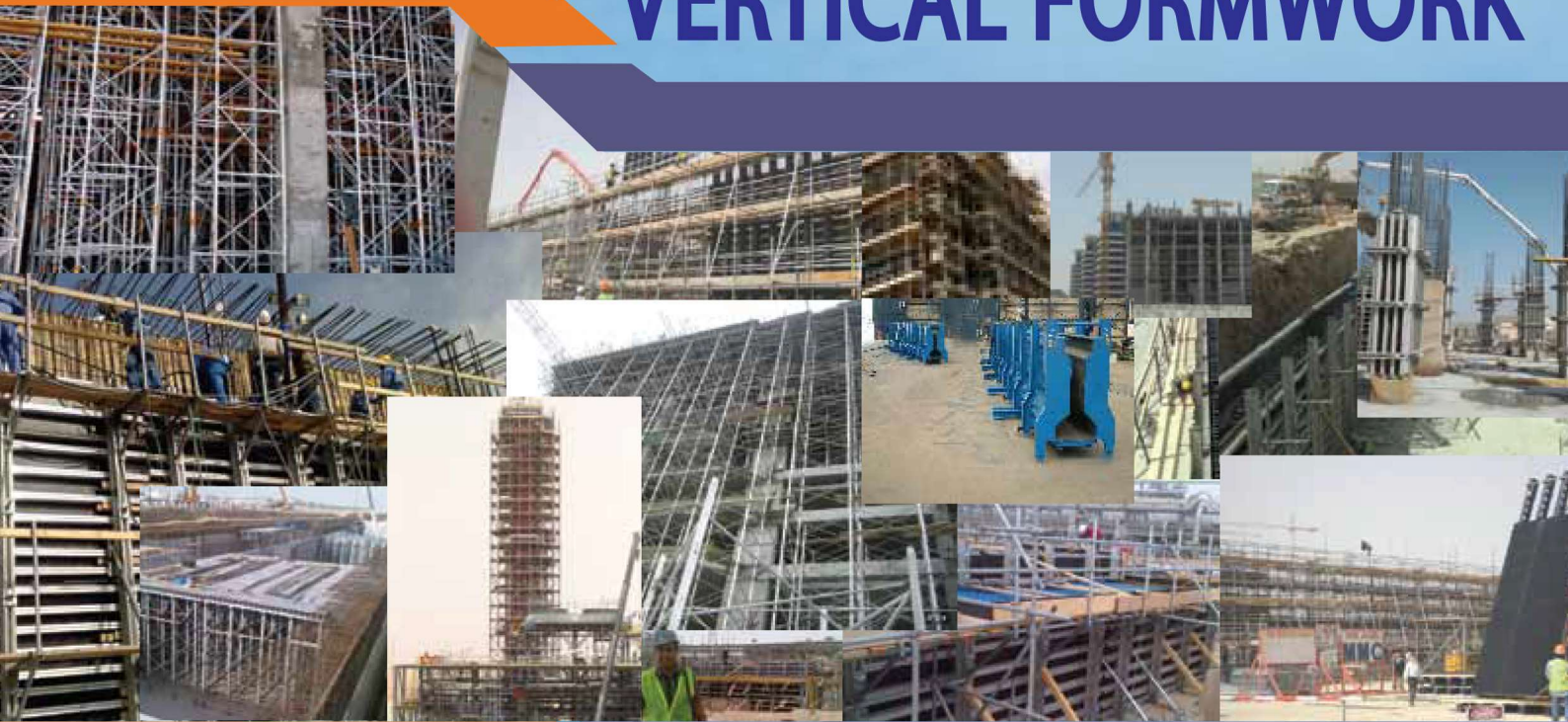


Delivering Safety , Global Formwork
And Engineering Solutions World-
Wide in High Efficiency

VERTICAL FORMWORK





A Message From The Chairman

In 2010, Gulf Scaffolding and Formworks Company (GSF) decided to take over Admtal for Formwork Company which was specialized in formwork steel whom was servicing most of international formwork companies which was founded in 1990. GSF a member of Global Otad Group Of Companies designs manufactures and markets concrete forming and shoring systems.

Since its foundation in Middle East, GSF has obtained a significant role in surpassing construction goals and market share both in domestic and international construction markets by offering a wide range of efficient formwork products solutions and specialty after sales services for more than 2000 clients in the Gulf counties and international by providing extended of scaffold and formworks services .GSF constantly promotes safety, quality service, commitment to our contracting partners and innovation on their projects.

GSF always combined its engineering skills and expertise in highly fashion to upgrade products by using the latest manufacturing technologies with its quality controls. Working side by side with our customers, gives our sales engineers the opportunity to give amazing solutions for complex construction formwork designs. This makes GSF to carry on serving the construction industries with confidence and commits to customer satisfaction and permanent hi-tech formwork and scaffold systems products quality.

Today GSF located on the second industrial city in Eastern province , Saudi Arabia over more than 7000m2 of closed Area and more than 10000 m2 of open area manufacturing all kind of formworks in high- quality products by using the latest technology , under third party inspection and using ISO 9001:2008 certification .

Chairman
Mohammed Skafi

VERTICAL FORMWORK



Delivering Safety , Global Formwork
And Engineering Solutions World-
Wide in High efficiency

World Headquarter Office

Novatel Business Park
P.O.Box.7121.
Dammam. KSA.
Tel.+966 3 8143288/99
Fax.+966 3 8143277
Web. www.gulfscaffolding.com.sa
M.E. Product Catalogue - Issued 2006

A member of Global Otad Co.



Global Scaffolding
& Formworks



005

VERTICAL FORMWORK

GSF SOLDIER



GSF SOLDIER SYSTEM

One of the most popular uses For Double Wall formwork is the GSF-SOLDIER system as main support Aluminum Beams for wall shuttering applications. Used with either the H20 timber Beam or GS 150,GS140,and GS120 Aluminium Beams.

The versatile GSF SOLDIER and aluminium beams combine to make ideal wall formwork system using primary and secondary beam support. The GSF SOLDIER and aluminium combinations have a full range of accessories to clamp the components quickly and safely.

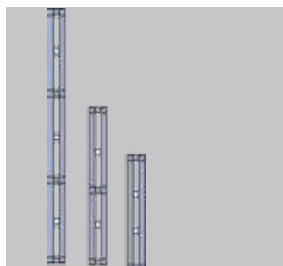


The wide range of high quality soldiers and accessories has developed as a result of working relationships with building partners and their engineers



ACCESSORIES

GSF SOLDIER

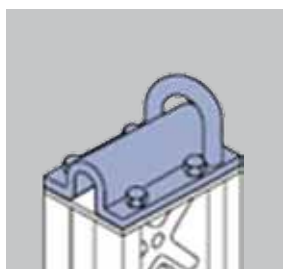
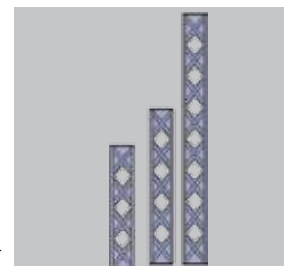


Soldier Corner

Code	size (mm)	Wt. (Kg)
GS214500	450	11.75
GS216750	675	17.6
GS219000	900	21.55
GS211125	1125	25.5
GS211800	1800	37.5
GS212700	2700	55.5
GS213150	3150	62.5
GS213600	3600	71.5

GSF Soldier

Code	size (mm)	Wt. (Kg)
GS204500	450	11.75
GS206750	675	17.6
GS209000	900	21.55
GS201125	1125	25.5
GS201800	1800	37.5
GS202700	2700	55.5
GS203150	3150	62.5
GS203600	3600	71.5

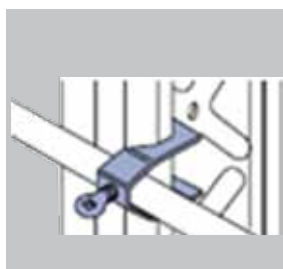
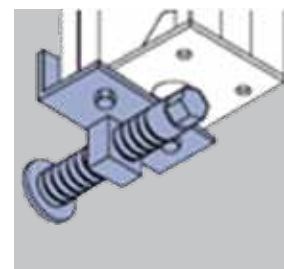


Lifting Bracket

Code	Description	Wt. (Kg)
GSF217	To provide facilities for lifting by crane	4.9

Form Jack

Code	Description	Wt. (Kg)
GSF216	used to level the form	4.2

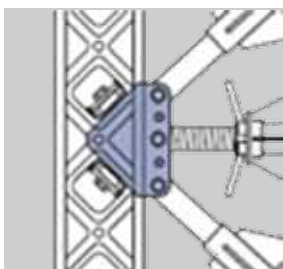
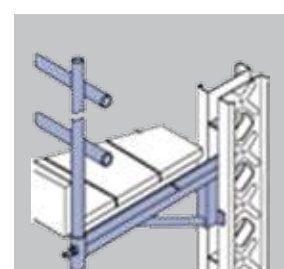


Waling Clamp

Code	Description	Wt. (Kg)
GSF282	To attach standard scaffold tube to a Soldier.	0.6

Catwalk Bracket

Code	Description	Wt. (Kg)
GSF401	can be fixed at any of the bolt holes.	5.7

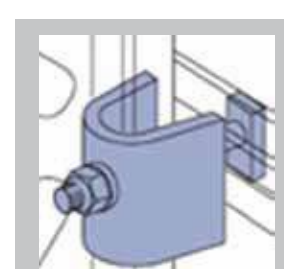


P.P. Bracket

Code	Description	Wt. (Kg)
GSF220	Used to give a positive connection for Shoring Adaptors to Soldiers.	12.8

Universal Anchor Clamp

Code	Description	Wt. (Kg)
GSF221	Used to fix S150 beams to Soldiers.	0.30

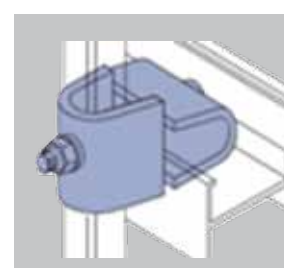


Support Plate

Code	Description	Wt. (Kg)
GSF224	To give additional support to the wailings.	3.6

Universal Clamp

Code	Description	Wt. (Kg)
GSF222	Used to fix S120 beams to Soldiers.	0.60

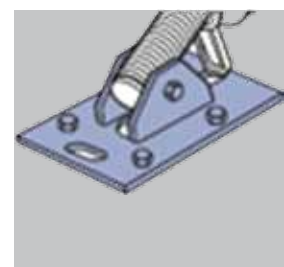


Shoring Adaptor L or R

Code	Description	Wt. (Kg)
GSFL 233	Bolted to the end of a	8.5
GSFR 233	Soldier for left or right	8.5

Swivel Base Adapter (Tilt Plate)

Code	Description	Wt. (Kg)
GSF412	For use in conjunction with Shoring adapter .	0.8



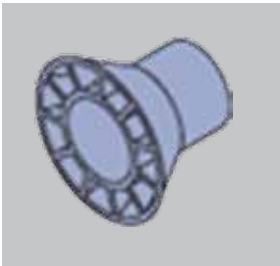
GSF SOLDIER

ACCESSORIES



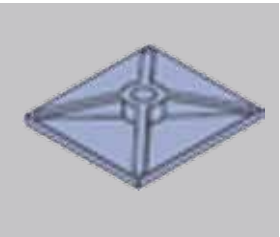
Aluminum Beam

Code	Size	Wt. g/(m)
GS150	150 x 80 MM	3823
GS140	140 x 75 MM	2997
GS120	120 x 70 MM	2568



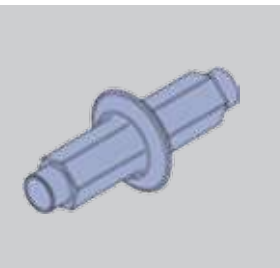
Sleeve Cone

Code	Description	Wt. (Kg)
GSF328	For use with the Plastic Sleeve tube.	0.01



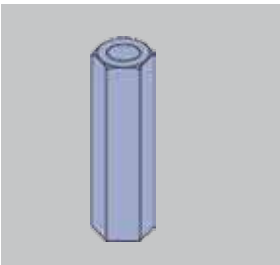
Washer Plate

Code	Description	Wt. (Kg)
GSF273	Washer Plate SWL = 115 KN	0.65



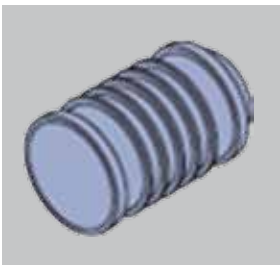
Water Stopper

Code	Description	Wt. (Kg)
GSF275	To be used between two tie bars	0.65



Connecting Nut

Code	Description	Wt. (Kg)
GSF351	Used for the joining of tie rods	0.42



Repeat Plastik Plug

Code	Description	Wt. (Kg)
GSF350	Tight fitting plug	0.0095

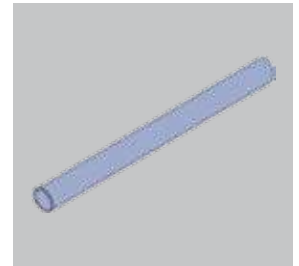
Plumbing Struts

Code	Description	Wt. (Kg)
GSF476	Stabilizer for formwork	12 -17



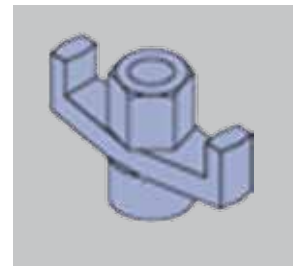
Plastic Sleeve

Code	Description	Wt. (Kg/m)
GSF32720	To keep distance between form faces.	0.66



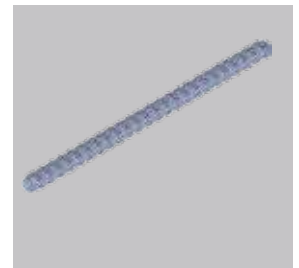
Wing Nut washer

Code	Description	Wt. (Kg)
	To be tied w/t washer plate	
GS3291	15 mm	0.33
GS3292	20 mm	0.34



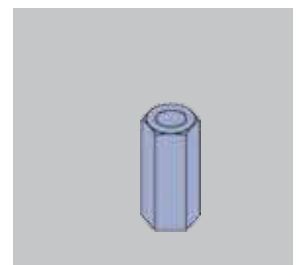
Tie Rod SAS 900/1100

Code	Description	Wt. (Kg)/m
GS3415	15mm Threaded rods yield load 159 KN	1.42
GS3420	20mm Threaded rods yield load 283 KN	2.56



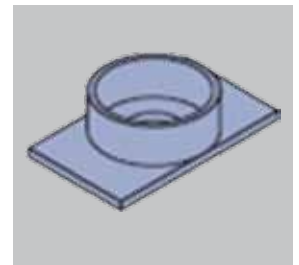
Hexagon Nut

Code	Description	Wt. (Kg)
GSF352	Use where access is restricted.	0.22



Tie Washer cover

Code	Description	Wt. (Kg)
GSF223	To be used end of tie	0.002

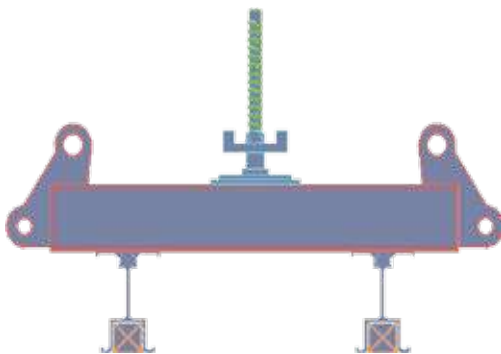


Circular Wall

GSF Adjustable Curved Wall Formwork is the perfect choice when constructing walls where both complex and simple curves are required.

The system has many applications including Silos, Circular walls, Circular Water Tanks, Pools and any architectural Curves

It provides Continuous adjustability and adaptability of formwork from structure to structure; also possible to change the radius of the wall within the same structure without any re-assembly and Steel Waller to Waller connection is simply done using the quick acting GSF Architectural steel wailing clamps.



Quick acting GSF Architectural steel wailing clamps Is used with adjustable threaded rod and connect tow of the Architectural steel Waller to result the desired radius of the circular formwork .

Plumbing struts can be adapted with it`s accessories . GS150 Aluminum beam or H20 beam can be installed between the plywood and the architectural steel Waller using the proper clamps to complete the circular formwork.

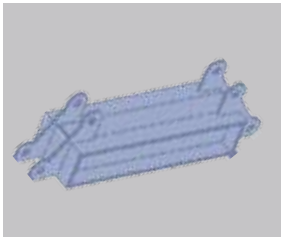
Circular Wall

ACCESSORIES



Flange Clamp

Code	Description	Wt. (Kg)
GSF410	Used to fix H20 beams to Steel Waller	1.0



Architectural Steel Waller

Code	Description	Wt. (Kg)
GSF411	Used to reduce desire radius .	18.0



Connecting Pin

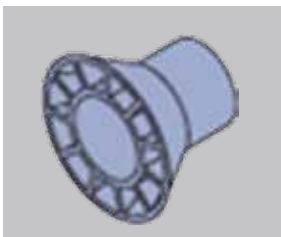
Code	Description	Wt. (Kg)
GSC1117	Connecting Pin	0.33



H20 Beam

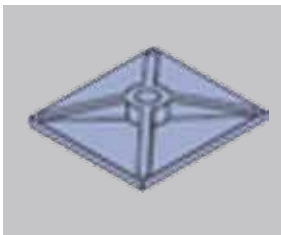
Code	size (cm)	Wt. (Kg)
GSF345	195	9.9
GSF346	2.9	14.50
GSF347	3.9	19.50
GSF348	5.9	29.50

Alwb. Moment = 5.0 KNm
Alwb. Transverse Force = 11.0 KN



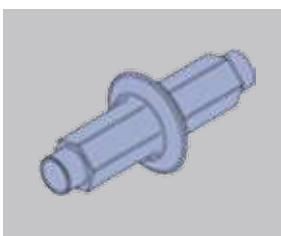
Sleeve Cone

Code	Description	Wt. (Kg)
GSF415	For use with the Plastic Sleeve tube.	0.01



Washer Plate

Code	Description	Wt. (Kg)
GSF273	Washer Plate SWL = 115 KN	0.65

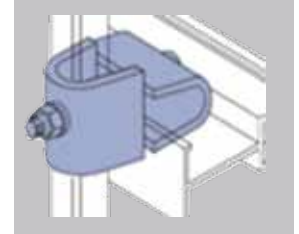


Water Stopper

Code	Description	Wt. (kg)
GSF275	To be used between two tie bars	0.65

Universal Clamp

Code	Description	Wt. (Kg)
GSF222	Used to fix S120 beams to Soldiers.	0.60



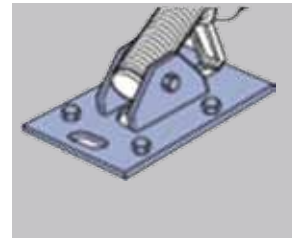
Plumbing Struts

Code	Description	Wt. (Kg)
GSF476	Stabilizer for formwork	12 -17



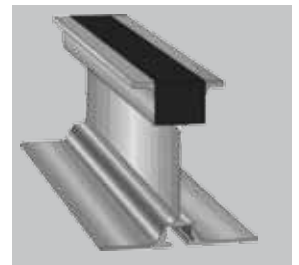
Swivel Base Adapter (Tilt Plate)

Code	Description	Wt. (Kg)
GSF412	for use in conjunction with Shoring adapter .	0.8



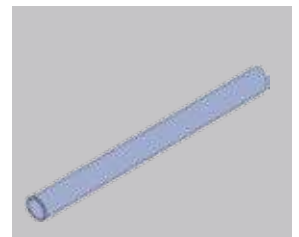
Aluminum Beam

Code	Size	Wt. g/(m)
GS150	150 x 80 MM	3823
GS140	140 x 75 MM	2997
GS120	120 x 70 MM	2568



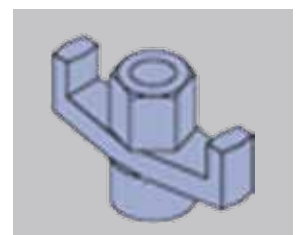
Plastic Sleeve

Code	Description	Wt. (Kg/m)
GSF327	To keep distance between form faces.	0.66



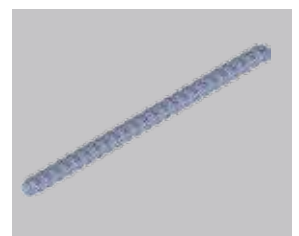
Wing Nut washer

Code	Description	Wt. (Kg)
	To be tied w/t washer plate	
GS3291	15 mm	0.33
GS3292	20 mm	0.34



Tie Rod SAS 900/1100

Code	Description	Wt. (Kg/m)
GS3415	15mm Threaded rods yield load 159 KN	1.42
GS3420	20mm Threaded rods yield load 283 KN	2.56



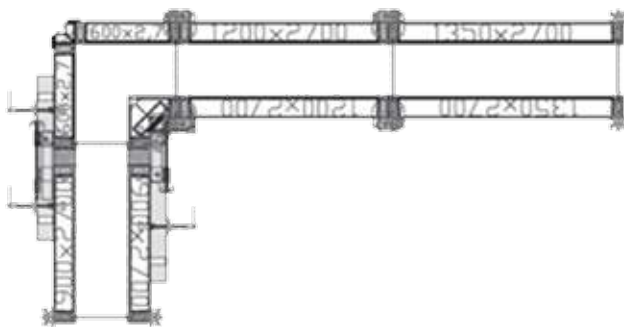
GSF Panel System

GSF FREME® PANEL FORMWORK SYSTEM

GSF Freme® Formwork Panel System can be used for large or small area surfaces, by using combined panel sizes attached with its accessories coupler which allows to connect and align at the same time, reducing the overall use than other walling systems.

GSF Freme® Formwork Panel System increases productivity on job site and reduces labor costs with concrete pressure to reach up to 75 Kn/m². High quality plywood or plastic boards, plastic finish for much longer lifespan and high durability and can achieve excellent concrete finishes. GSF Freme® Formwork Panel System available in various Heights of 3300mm, 3000mm, 2700mm, 1350mm and 1200mm. Also the Widths can be as of 2400mm, 1350mm, 1200mm, 1000mm, 900mm, 750mm, 600mm, 500mm, 450mm and 300mm.

GSF Freme® Formwork Panel System can be used of constructing of vertical formwork for walls, cores, columns and single-sided formworks application

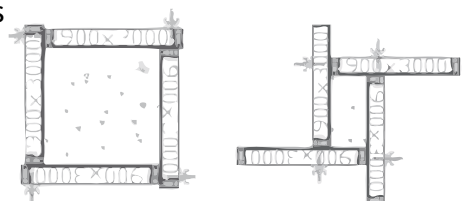


Those highly resistant steel GSF Freme® can be adapted for insertion of connection clamps in any position for easier mounting operations of tie rods. Less rods reduces labor costs up to 30%. They are easy to clean, and sealed with silicon seal. Wide range modularity of GSF Freme® formwork available in galvanized and powder coated with all necessary inside corners and outside ones to be compatibles with other formwork systems currently on the market

GSF Panel Formwork System can be used for large or small column sizes, by using combined panel sizes attached with its accessories coupler which allows to connect and align at the same time, reducing the overall use than other column systems.

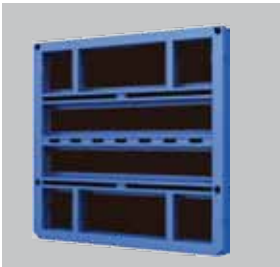
GSF Panel Formwork System increases productivity on job site and reduces labor costs with concrete pressure to reach up to 75 Kn/m². High quality plywood or plastic boards, plastic finish for much longer lifespan and high durability and can achieve excellent concrete finishes. GSF Panel Formwork System available in various Heights of 3300mm, 3000mm, 2700mm, 1350mm and 1200mm. Also the Widths can be as of 1350mm, 1200mm, 1000mm, 900mm, 750mm, 600mm, 500mm, 450mm and 300mm.

GSF Panel Formwork System has the flexibility to adjust the width of the column increments of 50mm which can be used in various column sizes



GSF Panel System

ACCESSORIES



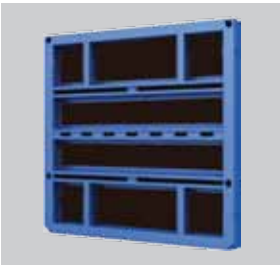
The 3000 Panel Series

Code	Length (mm)	Wt. (Kg)
GS300240	3000X2400	445
GS300135	3000X1350	225
GS300120	3000X1200	200
GS300100	3000X1000	155
GS300090	3000X900	145
GS300075	3000X750	135
GS300060	3000X600	115
GS300050	3000X500	105
GS300045	3000X450	95
GS300030	3000X300	80



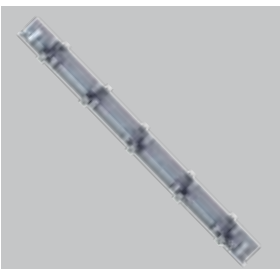
The 1350 Panel Series

Code	Length (mm)	Wt. (Kg)
GS135135	1350X1350	105Kg
GS135120	1350X1200	90Kg
GS135100	1350X1000	80Kg
GS135090	1350X900	75Kg
GS135075	1350X750	65Kg
GS135060	1350X600	55Kg
GS135050	1350X500	50Kg
GS135045	1350X450	47Kg
GS135030	1350X300	37Kg



The 1200 Panel Series

Code	Length (mm)	Wt. (Kg)
GS120240	1200X2400	155
GS120120	1200X1200	80
GS120100	1200X1000	75
GS120090	1200X900	69
GS120075	1200X750	60
GS120060	1200X600	52
GS120050	1200X500	48
GS120045	1200X450	43
GS120030	1200X300	35



**Fixed Outside Corner
Outside Panel Corner**

Code	Length (mm)	Wt. (Kg)
GS330FON	3300	59Kg
GS300FON	3000	55Kg
GS270FON	2700	48Kg
GS135FON	1350	24Kg
GS120FON	1200	23Kg

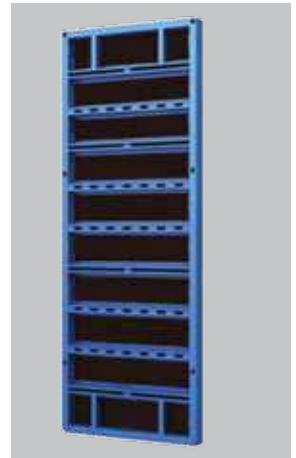


**Hinged inside Corner
Inside hinged Corner**

Code	Length (mm)	Wt. (Kg)
GS330HIN	3300	127
GS300HIN	3000	121
GS270HIN	2700	103
GS135HIN	1350	57
GS120HIN	1200	55

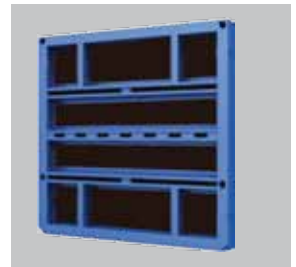
The 3300 Panel Series

Code	Length (mm)	Wt. (Kg)
GS330240	3300X2400	490
GS330135	3300X1350	260
GS330120	3300X1200	230
GS330100	3300X1000	195
GS330090	3300X900	175
GS330075	3300X750	145
GS330060	3300X600	130
GS330050	3300X500	115
GS330045	3300X450	110
GS330030	3300X300	90



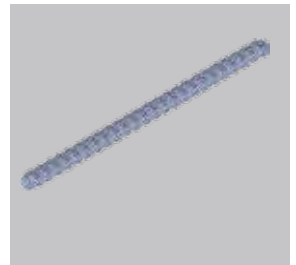
The 2700 Panel Series

Code	Length (mm)	Wt. (Kg)
GS270240	2700X2400	400Kg
GS270135	2700X1350	210Kg
GS270120	2700X1200	190Kg
GS270100	2700X1000	135Kg
GS270090	2700X900	125Kg
GS270075	2700X750	115Kg
GS270060	2700X600	105Kg
GS270050	2700X500	95Kg
GS270045	2700X450	90Kg
GS270030	2700X300	75Kg



Tie Rod SAS 900/1100

Code	Description	Wt. (Kg)/m
GS3415	15mm Threaded rods yield load 159 KN	1.42
GS3420	20mm Threaded rods yield load 283 KN	2.56



**Fixed Inside Corner
Inside Panel Corner**

Code	Length (mm)	Wt. (Kg)
GS330FIN	3300	130Kg
GS300FIN	3000	110Kg
GS270FIN	2700	102Kg
GS135FIN	1350	55Kg
GS120FIN	1200	50Kg



**Hinged Outside Corner
Outside hinged Corner**

Code	Length (mm)	Wt. (Kg)
GS330HON	3300	64Kg
GS300HON	3000	59Kg
GS270HON	2700	52Kg
GS135HON	1350	28Kg
GS120HON	1200	24Kg



ACCESSORIES

**GSF Panel
System**

Quick Acting Clamp

Code	Description	Wt. (Kg)
GSC112	Quick Acting Clamp	3.4

Multi Function Clamp

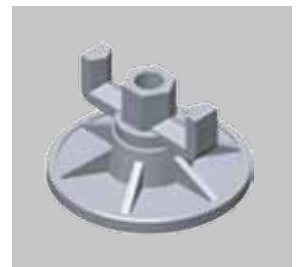
Code	Description	Wt. (Kg)
GSC111	Multi Function Clam	5.4


Multi Hexagun Nut

Code	Description	Wt. (Kg)
GSC113	Multi Hexagun Nut	0.4

Plate Nut

Code	Description	Wt. (Kg)
GSC114	Plate Nut	0.88


Connecting Pin

Code	Description	Wt. (Kg)
GSC1117	Connecting Pin	0.33

Access Bracket

Code	Description	Wt. (Kg)
GSC119	Access Bracket	14


Stop-End Tie Clamp

Code	Description	Wt. (Kg)
GSC115	Stop-End Tie Clamp	1.6

Universal Fixing Bolt Clamp

Code	Description	Wt. (Kg)
GSC116	Universal Fixing Bolt Clamp	1.4



GSF Panel System

ACCESSORIES



Lifting Hook

Code	Description	Wt. (Kg)
GSC122	Lifting Hook	12

Universal Corner Wailing

Code	Description	Wt. (Kg)
GSC123	Universal Corner Wailing	14



Single P/P Prop Rocking Base

Code	Description	Wt. (Kg)
GS1601	PP Waller Adapter	1.3

Swivel Base

Code	Description	Wt. (Kg)
GSF407	PP Base Plate	1.8

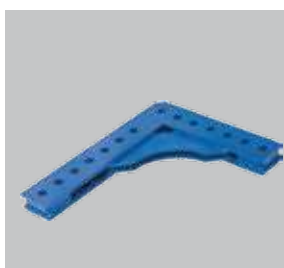


Push Pull Prop

Code	Description	Wt. (Kg)
GSF349	Plumbing Struds	33.0

Freme® X - Life sheet

Code	Description	Wt. (Kg/m ²)
GSF478	Freme® X - Life sheet	15.0



Corner Connection Plate

Code	Description	Wt. (Kg)
GSF409	Corner Plate	5.20

Half Splice Plate

Code	Description	Wt. (Kg)
GS1605	Corneror	5.20



Steel Waller Columns

The column formwork systems now available are normally modular in nature and allow quick assembly and erection on site while minimizing labor and crane time. The forms, made of steel or aluminum sometimes with a timber form-face liner, can be adjusted on site to give different column sizes. They have a variety of internal surfaces depending on the concrete finish required

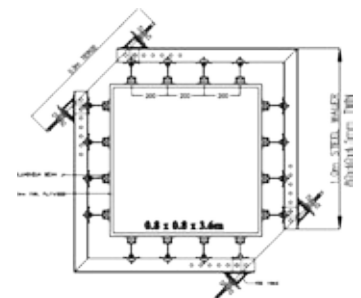
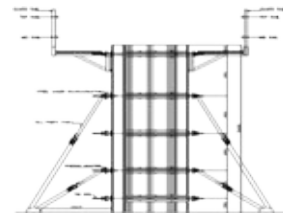
Adjustable Steel Waller



Fixed Steel Waller



This reduces the need for independent access. In some systems the props used to stabilize the column formwork are integral. The metal forms are easy to clean and reuse with little waste generated compared with traditional formwork. These are left in place until the concrete has gained sufficient strength and then the cardboard is carefully removed. For this type of formwork, working platforms for concreting have to be erected separately to allow access to the top of the column.



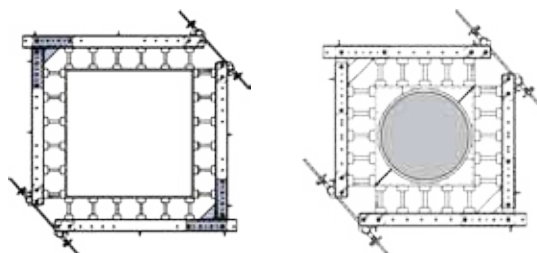
Fixed Steel Waller

GSF STEEL WALLER SYSTEM

Steel Waller formwork

One of the most popular uses of the GSF Column system which can be as fixed steel Waller or adjustable steel Waller Used with either the timber or GS150, GS140, and GS120 Aluminium beam .

The versatile GSF Steel Waller and aluminium beams combine to make ideal wall formwork system using primary and secondary beam support. The GSF Steel Waller and aluminium combinations have a full range of accessories to clamp the components quickly and safely.

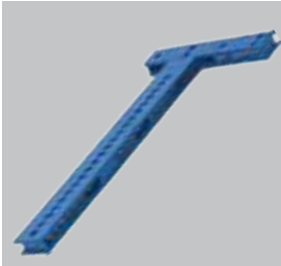


Adjustable Steel Waller



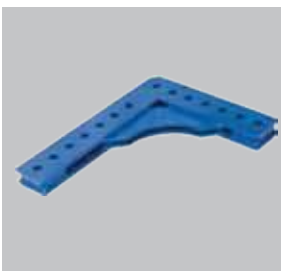
Steel Waller Columns

ACCESSORIES



Internal angle plate

Code	Description	Wt. (Kg)
GS1600	Internal Angle Connector	11.5



Corner Connection Plate

Code	Description	Wt. (Kg)
GSF409	Corner Connection Plate	



Connecting Pin

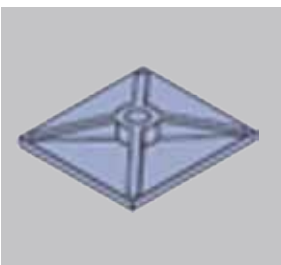
Code	Description	Wt. (Kg)
GS1603	Connecting Pin w/t Spring Cotter	0.3 Kg



H20 Beam

Code	size (cm)	Wt. (Kg)
GSF345	1.95	9.9
GSF346	2.9	14.50
GSF347	3.9	19.50
GSF348	5.9	29.50

Alwb. Moment = 5.0 KNm
Alwb. Transverse Force = 11.0 KN



Washer Plate

Code	Description	Wt. (Kg)
GSF273	Washer Plate SWL = 115 KN	0.65

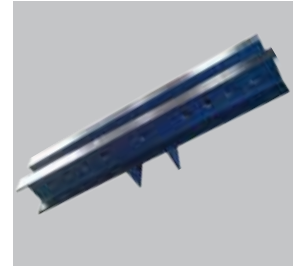


Access Bracket

Code	Description	Wt. (Kg)
GSC119	Access Bracket	14

Steel Waller

Code	size m	Wt. (Kg)
GS16050	0.50 m	9.00
GS16075	0.75 m	13.50
GS16100	1.00 m	17.50
GS16125	1.25 m	22.00
GS16150	1.50 m	26.50
GS16175	1.75 m	31.00
GS16200	2.00 m	35.00
GS16225	2.25 m	39.50
GS16250	2.50 m	43.80
GS16300	3.00 m	52.80
GS16400	4.00 m	71.00



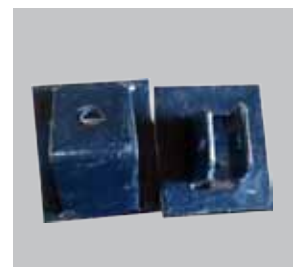
Tie Bracket

Code	Description	Wt. (Kg)
GS1602	Tie Bracket	4.5



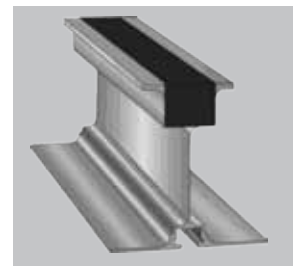
Tie Yoke

Code	Description	Wt. (Kg)
GS1604	Tie rod corner adapter	1.6



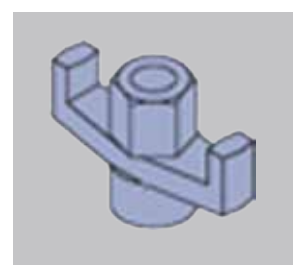
Aluminum Beam

Code	Size	Wt. g/(m)
GS150	150 x 80 MM	3823
GS140	140 x 75 MM	2997
GS120	120 x 70 MM	2568



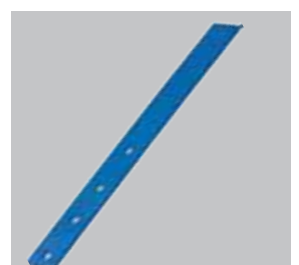
Wing Nut washer

Code	Description	Wt. (Kg)
	To be tied w/t washer plate	
GS3291	15 mm	0.33
GS3292	20 mm	0.34



Half Splice Plate

Code	Description	Wt. (Kg)
GS1605	Half Splice Plate	5.20



Single Side Shutter



GSF single-Side walls Shutter are uses different steel frames which can be put one on each other and connected with steel pins to reach requested casting height.

Typical One sided steel structure is composed out of two parallel frames which are braced and fixed together with horizontal and oblique scaffolding tubes with swivel couplers. Front of those steel structural triangles are different form of aluminum beams or H20 timber beams .

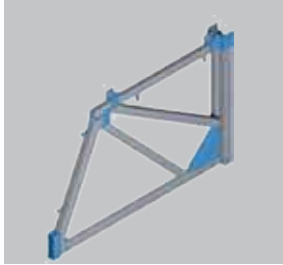
GSF singel side shutter is ideal for single side concrete applications and can be used to reach a height up to 9 meters . In addition to GSF S.S.S. ,Aluminum GS150 can be used to achieve the same casting purposes with adequate results .



Front and back foot can be adjusted in height with Adjustable wrench, allow to make plumbing and adjust the structure when necessary.

Single Side Shutter

ACCESSORIES



Middle Frame Type

Code	Description	Wt. (Kg)
GSF356	Supportting Frame Unite Height is 189 cm, Length is 306 cm.	335,0

Top Frame Type

Code	Description	Wt. (Kg)
GSF357	Supportting Frame Unite Height is 286,5 cm, Length is 222 cm	315,0

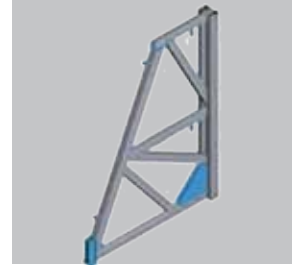
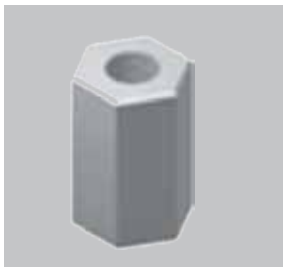
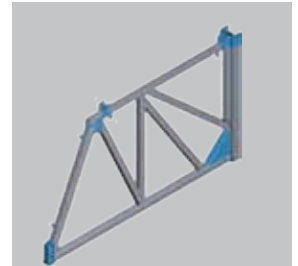


Plate Nut

Code	Description	Wt. (Kg)
GSC114	Plate Nut	0.88

Bottom Frame Type

Code	Description	Wt. (Kg)
GSF359	Supportting Frame Unite Height is 227 cm Length is 408 cm.	415,0

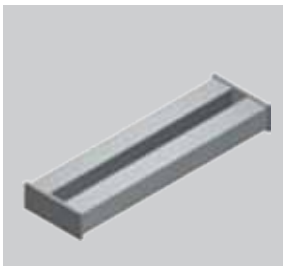


Multi Hexagon Nut

Code	Description	Wt. (Kg)
GSF113	Multi Hexagon Nut	0.4

Access Bracket

Code	Description	Wt. (Kg)
GSF119	Access Bracket	14



Steel Waling

Code	Description	Wt. (Kg)
GSF236	Formwork fixing wailer	4,4

She Bolts

Code	Description	Wt. (Kg)
GSF353	Ground Anchour Rod	1.8



Universal Fixing Bolt

Code	Description	Wt. (Kg)
GSF354	Quick acting Clamp	1.5

Back Foot

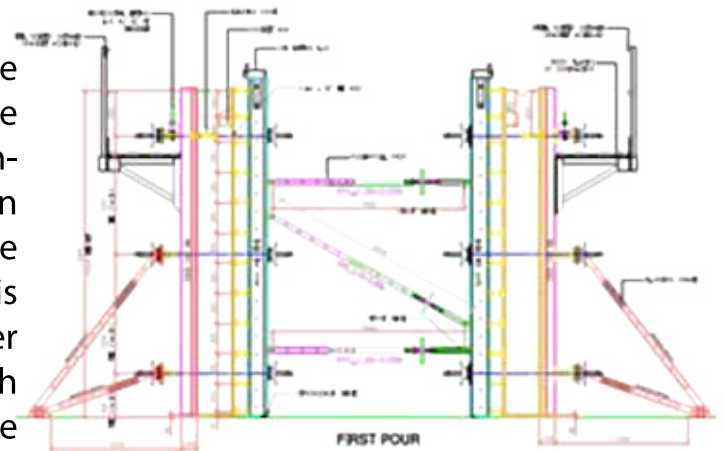
Code	Description	Wt. (Kg)
GSF355	Foot box at the Bottom Frame	18,0



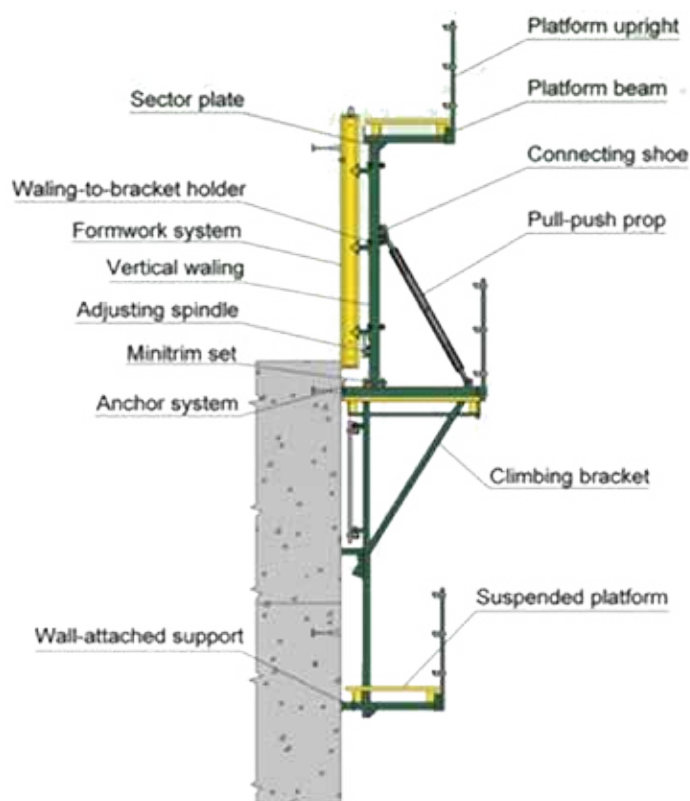
Core System

On Slab Cores

The on slab core system is simplest core system where it consists of basically of double wall system with plumbing struts. Those formwork consists of Aluminum beams, wooden with steel solder or Waller where with reliable support construction for the wall formwork is created. Its a crane handle core With Flipper lock platforms on inside of cores which provide safe working environment for the crew to work on core walls.



The on Slab core system is a crane handled core system with Flipper lock platforms on the inside of cores which provide safe working environment of the crew to work on core walls



The core is also suitable for external walls. It comes with bracket and safety platform. It is assembled at work site for use. It is fast to erect and to connect securely to the bushes and imbedded cones provided.

Core System

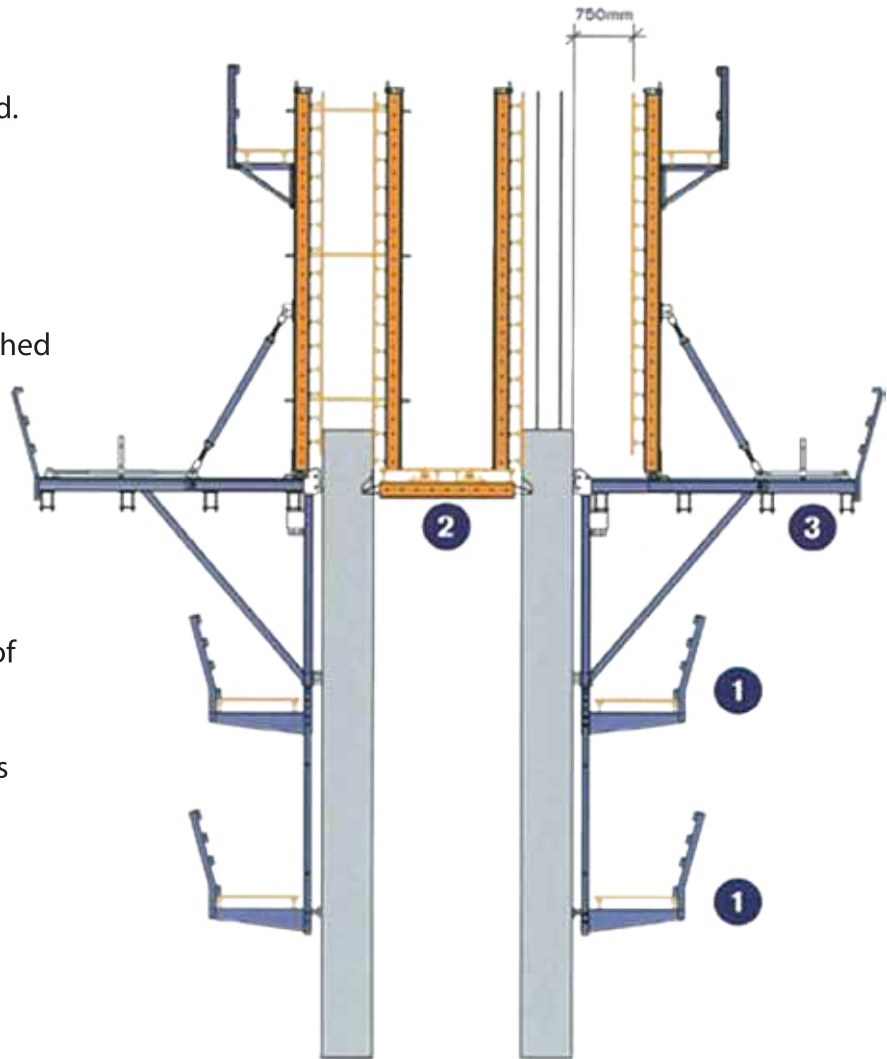
Crane Handled Rollback (CHR)

Increased Productivity

Aluma's Roll Back Form is a frame system that IS mounted on a roller track so that the form can be moved. intact. away from the wall area for stripping and finishing purposes.

Features and Benefits

- Increased Safety - workers not required to be on form while attached to crane
- Reduced Crane time
- Versatility
- Rolls back 750mm away from concrete face
- Full Adjustability • controls yaw, pitch and elevation
- Trailing Platform allows patching of concrete and removal of previous landing bolts
- Heavy Duty Brackets gives workers confidence especially With greater heights.



SAFETY

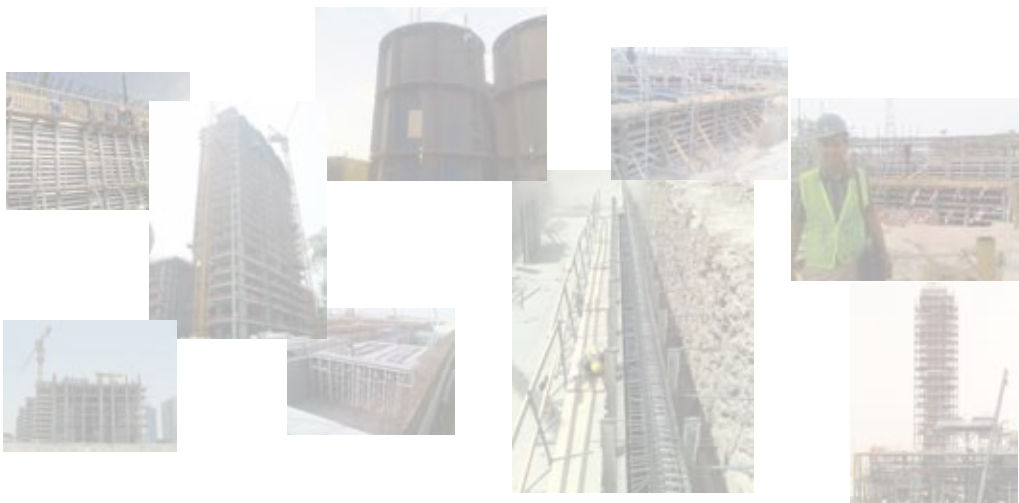
- 1 Trailing Platforms
- 2 Automatic Flipper Lock Platform
- 3 2.4m Wide Main Platform



DELIVERING SAFETY , GLOBAL FORMWORK AND ENGINEERING
SOLUTIONS WORLD-WIDE IN HIGH EFFICIENCY



KSA • QATAR • UAE • KUWAIT • LIBYA • JORDAN • IRAQ • TORONTO • NEW JERSEY



Your Partner To Build...



Saudi Arabia

New Dammam industrial Area

Mob: +966 544473399

Mob: +966 502144757

fattah@globalotad.com

islam@globalotad.com

Qatar

Global scaffolding

P.O.Box : 21054

Doha-Qatar

Mob: +974 7059 9955

mob: +974 7040 402

Info@gsf-qatar.com

Bahrain

Roma Rose Co

Mob: +973 666 22 558

info@rtccbh.com

Mob: +973 667 22 274

www.gulfscaffolding.com.sa