



ACCESS SCAFFOLDING

www.gulfscaffolding.com.sa



A Message From The Chairman

In 2010, Gulf Scaffolding and Formworks Company (GSF) decided to take over Admtal for Formwork Company which was specialized in formwork steel whom was servicing most of international formwork companies which was founded in 1990. GSF a member of Global Otad Group Of Companies designs manufactures and markets concrete forming and shoring systems.

Since its foundation in Middle East, GSF has obtained a significant role in surpassing construction goals and market share both in domestic and international construction markets by offering a wide range of efficient formwork products solutions and specialty after sales services for more than 2000 clients in the Gulf counties and international by providing extended of scaffold and formworks services .GSF constantly promotes safety, quality service, commitment to our contracting partners and innovation on their projects.

GSF always combined its engineering skills and expertise in highly fashion to upgrade products by using the latest manufacturing technologies with its quality controls. Working side by side with our customers, gives our sales engineers the opportunity to give amazing solutions for complex construction formwork designs. This makes GSF to carry on serving the construction industries with confidence and commits to customer satisfaction and permanent hi-tech formwork and scaffold systems products quality.

Today GSF located on the second industrial city in Eastern province , Saudi Arabia over more than 7000m2 of closed Area and more than 10000 m2 of open area manufacturing all kind of formworks in high- quality products by using the latest technology , under third party inspection and using ISO 9001:2008 certification .

Chairman
Mohammed Skafi

ACCESS SCAFFOLD



Delivering Safety , Global Formwork
And Engineering Solutions World-
Wide in High efficiency

World Headquarter Office

Novatel Business Park
P.O.Box.7121.
Dammam. KSA.
Tel.+966 3 8143288/99
Fax.+966 3 8143277
Web. www.gulfscaffolding.com.sa
M.E. Product Catalogue - Issued 2006

A member of Global Otad Co.



ACCESS SCAFFOLD

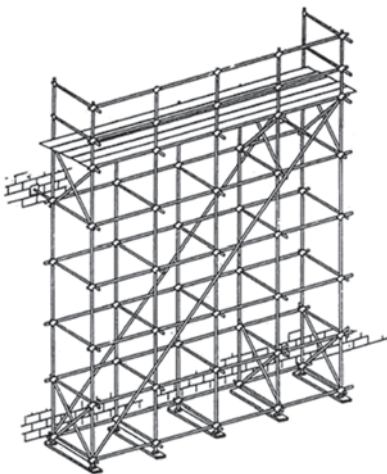
ACCESS SCAFFOLD

Tube and Fittings

GSF Hire and Sales sells all scaffold fittings types that are widely used and approved by scaffolders. They are of a high quality and tested to the relevant British and European standards. GSF Hire and Sales also have scaffolding fittings for hire. They are inspected and serviced frequently to ensure that they are reliable on site.



GSF has been the same with scaffolding through our establishing work in the product's development. Having been the leader provider of tubular steel scaffolding, we have been at the heart of all major development in the market ever since.



We offer an extensive range of scaffold tube, fittings and boards, and accessories capable of following the most complex building and plant profiles, fitting into uncomfortable spaces and accommodating changing requirements. We can make tubes and fittings adaptable for almost any access application. Tube is available in galvanised and black steel material. Both pressed and drop forged fittings are available and all scaffold boards conform to OSHA standards .

Bracing-Tube & Coupler Scaffolds

ACCESS SCAFFOLD

Cuplok Access Scaffolding

GS-CUPLOK is a multi-purpose scaffold system in the region . It is a well proven heavy duty support system for building in civil engineering projects. Is relatively light and easy to assemble and suitable for shoring support or access which offer you absolute confidence when using this system. Both vertical and horizontal members are manufactured to BS1130 and EN10219 standard and all components meet ARAMCO standards and specifications



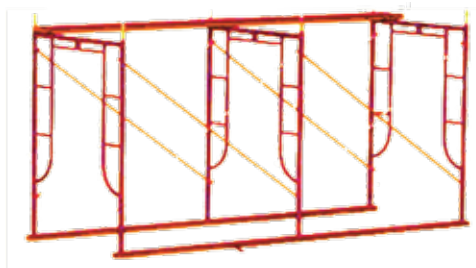
GS-CUPLOK access scaffolding is a fast, versatile and optimized system of scaffolding used for construction, maintenance projects, tier and safety staircase systems. Horizontals are fastened quickly with firm clamping action making the joint rigid. Erecting and dismantling is easy and quick and the system is low in maintenance.

Most of its access applications are New buildings, building refurbishment, building extensions, house building maintenance , sign installation, mobile scaffold towers, civil engineering , structures for various events and industrials access scaffold.

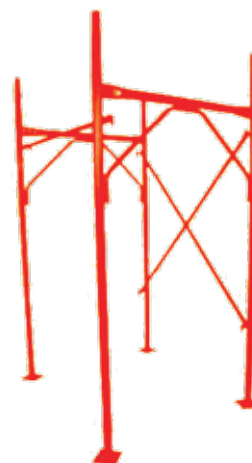
ACCESS SCAFFOLD

Light Weight H Frame Systems

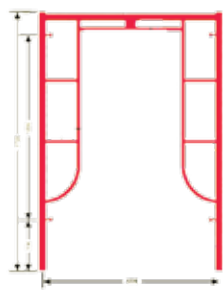
Very good system for access scaffolding external system, it is designed to be easily erected and dismantled. This 2mm "H" Frame, or vertical member, has a pin on top for easy connection. This allows you to erect the frames faster and to any height with maximum safety and stability without any loose fittings inside. The external systems have a three way support to hold greater load and ensure greater stability. The vertical frames (H- Frames) are available in side ladder type step ladder and aluminium ladder. Custom made is always available.



Korean type



Italian type

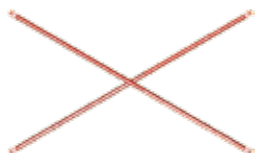
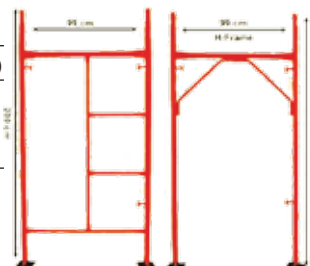


Korean Frame unit (2mm Thk.)

Code	Description	Wt. (kg)
GSFF100	Frame unit 1700mmX1220mm	12.0

Italian Frame unit (2mm Thk.)

Code	Description	Wt. (kg /m)
GSFF110	Frame unit	19.0
GSFF111	ladder Frame unit 2000mmX1000mm	20.0

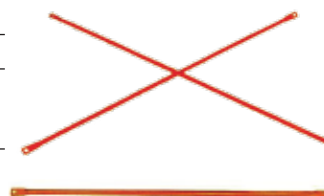


Cross Brace

Code	Description	size(m)
GSFF112	Cross Brace Ø 27 x 2.0 mm	1.8

Cross Brace

Code	Description	size(m)
GSFF113	Cross Brace Ø 27 x 2.0 mm	2.7
GSFF114	Diagonal Brace	2.5



Extension Pin

Code	Description	size(m)
GSFF115	Extension Pin	1.8

Extension Pin

Code	Description	size(m)
GSFF115	Extension Pin	1.8



Aluminum Stairway Tower

GSF Mobile Aluminum Stair Tower Has Been Designed In Case Of Tools And Materials Can Be Moved Easily And Safely Stairway Towers Supplied With Multiple Long And Wide Platforms Size With Extra Wide Staircase With Non-stop Treads For Safety And Easy Access To Platform It Has Been Designed With An External Handrail For Climbing Security And Safety With Integral Landing Platform On Staircase For Economical Access To Platform.

Code GSFA1



Single Width Mobile Tower

With Single Size Platform Is Suitable For Multiple Applications. The Ideal Mobile Scaffold Tower For Conditions Where Narrowness Prevails. The Adjustable Outriggers Allow For Multiple Adaptions. When Fully Extracted The Outriggers Provide Secure Support On Any Surface For Safe Working Conditions In Extended Heights . When Retracted, The Tower Can Easily Be Moved Through Alleys, Doorways Etc. Or Be Used For Wall Side Applications. Easy To Handle Due To Light Weight, Push In

Connection On Frame Sections And Snap Fasteners On Braces, Exact Leveling By Ballscrews And Large Swivel Castors Of 200mm Dia. This Main Frame Is Design For Those People Who Need A Ladder In The Main Frame.

Available Sizes:

Main Frame Width : 75cm, 85cm

Main Frames Height: 1.5m, 2m, 2.5m

Main Frame Length: 1.8m, 2m, 2.5m

Double Width Mobile Tower

Our Aluminum Tower Offer An Ideal Solution For Those Hard-to-reach Places That Require Safe And Convenient Access. Simply And Easy To Erect Thanks To The Lightness Of Aluminum Our Frames And Accessories Are Durable, Low-maintenance And Mobile Giving You The Versatility To Relocate Or Adjust. This Main Frame Is Design For Those People Who Need A Ladder In The Main Frame.

Features

- Maximum Load Rating 250kg (Distributed) Per Platform
- Evenly Distributed 500kg
- Welded Frame Design
- Solid Aluminum Short Spigots For Ease Of Assembly
- Ladder Buildin Main Frames With Strong Welding
- High Quality Adjustable 8 Inches Castors With Brake
- Diagonal Brace Ensures The Platform Is Sturdy And Stable

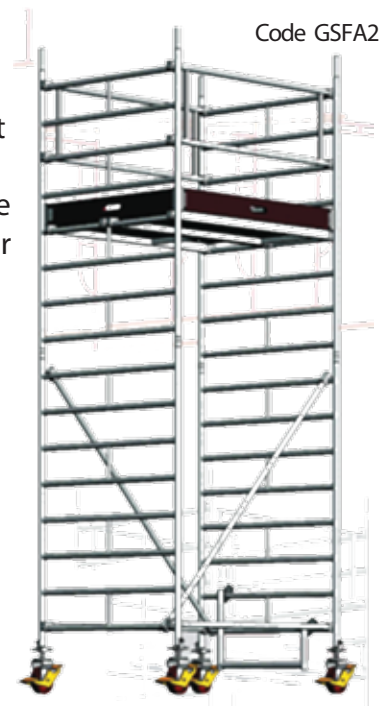
Available Sizes:

Main Frame Width: 1.45m

Main Frame Height: 1.5m, 2m, 2.5m

Main Frame Length: 1.8m, 2m, 3m

Code GSFA2



ACCESS SCAFFOLD

ACCESSORIES



GSF Steel / Beam ladder EN 74 / BS 1139

Code	Description	Wt. (kg /m)
GSF451	Steel ladder 300 X 300 x 4 mm Galvanized or painted	7.3

Aluminium Straight Ladder

Code	Size (m)	Wt. (kg)
CS-09	8 ft x 2.40 m	7.2
CS-11	10 ft x 3.00 m	9.0
CS-14	12 ft x 3.60 m	10.0
CS-16	14 ft x 4.20 m	11.4
CS-18	16 ft x 4.80 m	12.7
CS-20	20 ft x 6.00m	15.9

can be provided in any Size up on request .

* Custom made always Available



GI Scaffold tube EN 39 4 mm Thk Embossed

Code	size(m)	Wt. (Kg)
GI10	1.0	4.70
GI15	1.5	7.05
GI20	2.0	9.40
GI25	2.5	11.75
GI30	3.0	14.10
GI35	3.5	16.45
GI40	4.0	18.80
GI45	4.5	21.15
GI50	5.0	23.50
GI60	6.0	28.20

Forced Double Coupler EN 74 / BS 1139

Code	Description	Wt. (g)
GS190011	48.4mm O.D. scaffold tubes at right angles SWL=9.1KN (Slip)	1025



Forced Swivel Coupler EN 74 / BS 1139

Code	Description	Wt. (g)
GS190010	48.4mm O.D. scaffold tubes at any angle SWL=6.25 KN (Slip)	1260



Putlog Coupler EN 74 / BS 1139

Code	Description	Wt. (g)
GS190012	48.4mm scaffold tubes at right angles transoms and putlogs to ledgers SWL=0.6 KN (Slip)	780

Girder Coupler AS 1576.2

Code	Description	Wt. (g)
GS190013	Used in pairs for right angle clamping of 48.4mm O.D. scaffold tubes to steel beam flanges up to 45mm thick. SWL=30 KN	1550

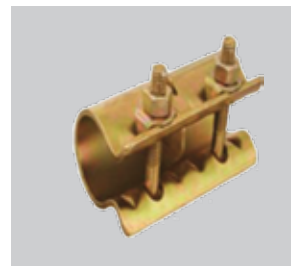


Joint-Pin Connector EN 74 / BS 1139

Code	Description	Wt. (g)
GS190014	internal end to end connection of 48.4mm O.D. scaffold tubes vertically only SWL=Non in Tension	900

Sleeve Coupler EN 74 / BS 1139

Code	Description	Wt. (g)
GS190015	external end to end connection of 48.4mm scaffold tubes horizontally or vertically (standard to standard or ledger to ledger). SWL=3.1 KN (Tension)	1050



Fixed Finial EN 74 / BS 1139

Code	Description	Wt. (g)
GSF266	Connects a scaffold tube to another at right angles Ideal for guardrails and barriers.	800

Drop Forged Half Coupler EN 74 / BS 1139

Code	Description	Wt. (g)
GSF452	tube size: 48 mm Dia Plated Used to connect Diagonal Brace on the Scaffold Structure	550



ACCESSORIES

ACCESS SCAFFOLD



Pressed Swivel Coupler EN 74 / BS 1139

Code	Description	Wt. (g)
GSF270	Tube Size: 48 Mm Dia Used To Connect Two Scaffold Tubes At Any Angle Swl=6.25 Kn (Slip)	860

Pressed Double Coupler EN 74 / BS 1139

Code	Description	Wt. (g)
GSF271	Tube Size: 48 Mm Dia Used To Connect Two Scaffold Tubes At 90 Swl=6.25 Kn (Slip)	760



Board Retaining Coupler

Code	Description	Wt. (g)
GSF453	Tube Size: 48 Mm Dia Plated Used To Connect Two Scaffold Boards With The Tubes	600

Joint Pin Coupler

Code	Description	Wt. (g)
GSF268	Tube Size: 48 Mm Dia Used To Extend Scaffold Tubes Internally Swl=none Intension	900



Adjustable Stair Tread Coupler

Code	Description	Wt. (kg)
GSF454	To Connecting Scaffold Tube To Timber Stair Treads Suitable For Angles Of 28-90°	1.48

Wooden Planks LVL - OSHA Conform BS 2482

Code	Description	Wt. (kg/m³)
GSF408	Used As Working Platform. (42mmX230mmXVario us Length) .	670



Steel Platforms

Code	Description	Size (mm)
GS4525	Working Platform That	228x2500
GS4520	Relevant Safety Regulation.	228x2000
GS4515		228x1500
GS4513		228x1295

Steel Ladder Bracket

Code	Description	Wt. (Kg)
GSF470	Ladder Bracket	3.50



U - platform stairs

Code	Description	Size (m)
GSF45710	Safe, Fatigue Free Stairway	1.00 x 1.0
GSF45715	Capacity 2.0kn/m2 Step	2.57 x 1.5
GSF45720	Height Of 200mm	2.57 x 2.0
GSF45727		3.07 x 2.0

Caster wheel

Code	Description	SWL
	Heavy Duty Caster Wheels Comes In Many Size 6",7"and 8" Both In Rubber With Brakes	272kg
GSF2841		726kg
GSF2842	Steel With Brakes	



Fencing Coupler

Code	Description	Wt. (Kg)
GSF279	A High Quality Coupler To Secure Metal Fencing Uprights Together.	0.77

Wire Lashings

Code	Description	Length(m)
GSF45824	Galvanised Steel Wire Lashings For Securing Equipment Or Materials.	2.4
GSF45845	6mm Wire With A Galvanized Eye At One End.	4.5



ACCESS SCAFFOLD

ACCESSORIES



Reveal Pin

Code	Description	Wt. (Kg)
GSF459	Inserted Into The End Of A Scaffold Tube And Adjusted To Clamp It Into Any Aperture To Provide Bracing For The Scaffold Structure.	0.74



Ladder Clamp Coupler

Code	Description	Wt. (Kg)
GSF471	Clampsladder Styles Securely To A Horizontal Scaffold Tube. Use In Pairs.	0.74



Scaffolding tags

Code	Description	size
GSF334	15 mm Matte Vinyl	4 x 5-1/2"



Safety Helmet

Code	Description	size
GSF465	En397. Available In White, Red Blue, Green And Yellow.	adjustable



Gloves

Code	Description	size
GSF464	Suede Palms And Finger Tips For Abrasion Resistance	adjustable

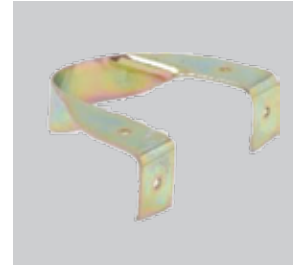


Safety Glasses

Code	Description	Wt. (g)
GSF466	Wraparound Close Fitting Style. Adjustable Angle Clear Plastic Lenses. En166 I.F.	110

Toeboard Clip

Code	Description	Wt. (Kg)
GSF286	Secures A Toeboard To The Scaffold Standard.	0.74kg



Gin Wheel Swl 50kg

Code	Description	Wt. (Kg)
GSF460	A Free-running Pulley Wheel Incorporating A 51mm Diameter Drop-forged Swivel Ring, Suitable For Rope Of Up To 19mm Diameter.	4.88



Scaffold Spanner

Code	Description	Wt. (g)
GSF461	Aluminum Handle Scaffold Spanner Zinc-plated Steel.	240



Safety Harness EN 361, EN 358, EN 1497

Code	Description	size
GSF463	Harness With 'D' Ring On The Scaffolder's Back For One Point Attachment And Strong Stretchable Webbing	adjustable



Magnetic Spirit Level

Code	Description	Wt. (g)
GSF462	Light Alloy Case. Sticks Firmly To Steel Scaffold Tubes With Two Integral Rare-earth Magnets. Length 24cm	180 g



Hi-Vis Waistcoats

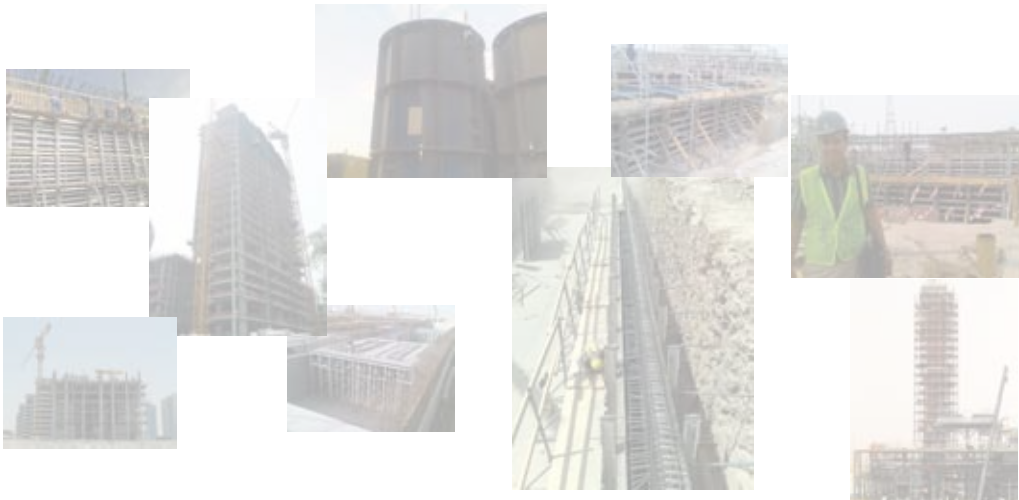
Code	Description	size
GSF467	Hi Vis Waistcoat In Either Orange Or Saturn Yellow En 471 Class 2	adjustable



DELIVERING SAFETY , GLOBAL FORMWORK AND ENGINEERING
SOLUTIONS WORLD-WIDE IN HIGH EFFICIENCY



KSA • QATAR • UAE • KUWAIT • LIBYA • JORDAN • IRAQ • TORONTO • NEW JERSEY



Your Partner To Build...



Factory

2nd industrial city,
Al-Madinah St.
Dammam, Saudi Arabia
Tel. : + 9663 820 6334
Fax.: + 9663 820 6335
info@gulfscaffolding.com.sa

Head Office

Novotel Business Park
P.O.Box 7121,
Dammam 31462
Saudi Arabia
Tel. : + 9663 8143288 / 99
Fax.: + 9663 8143277

Qatar

Global Scaffolding
P.O.Box : 21054
Doha
State of Qatar
Tel. : + 974 44 322249
Fax : + 974 44 322248

Abu Dhabi

Gulf Scaffolding Co.
P.O.Box 44051,
Abu Dhabi,
United Arab Emirates
Tel : + 971 2 6761600
Fax: + 971 2 6761650

Bahrain

Al-Nooh & Global Otad Co.
P.O.Box : 3114 ; Manama
Kingdom of Bahrain
Tel. : + 97317253994
+ 97317252230
Fax : + 973 17230221

Jordan

G.O. For Scaffolding And Formworks
Al-rajeeb Industrail Area
Amman Jordan
Office + 962 6 416 59 77
Mobil + 962795 44 55 70
Fax : + 962 6 416 59 76

www.gulfscaffolding.com.sa